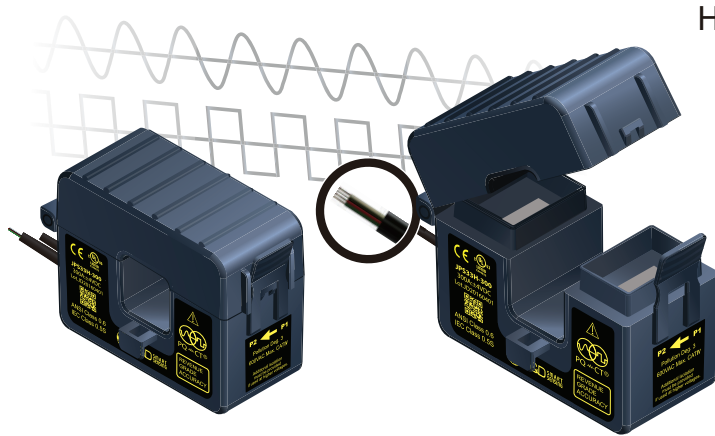


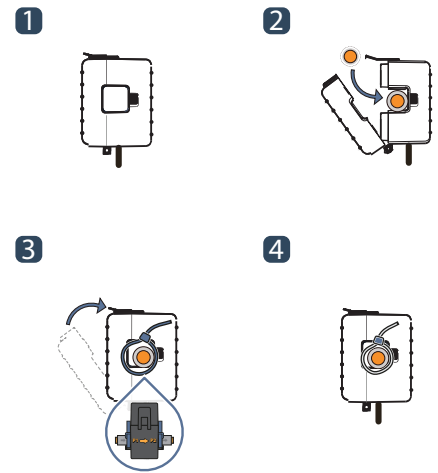
Split Core
On
Primary
Fastening

NEW
HIGH QUALITY
TECHNOLOGY

OPEN-LOOP TECHNOLOGY PQ-CT JPSXXH SERIES



How to use >>>



JPS10 / 20 / 33 / 52H Hall Sensor series, applying with accurate laminating core split technology and Open Loop technology PQ-CT OPEN JPSXXH Series designed for strong durability and improves both existed error in low current and error occurred by 'external vibration and shock' to minimize tolerance on cutting cross section of core. As compact one-touch split structure, it offers best solution for security and fast installation on high frequency monitoring device instead of cutting power line. Rated current is DC5A-1200A, it satisfies with accuracy 1.0 and it certifies with security accreditation IEC61010-1, UL61010-1 and EN61010-1 as official document.

>>> Applications

- Power Metering.
- Sub-metering for Building; Energy efficiency monitoring, consumption analysis, and cost allocation.
- Power Quality Monitoring for Distribution System Equipment.
- Condition Monitoring for Conveyers, Pumps, etc.
- Hybrid Inverter for Home Energy Storage.
- Distributed Measurement Systems.

>>> Features

- PC spring, secure locking hinge, one-touch structure make easy to install to the existent equipments such as a power distribution boards.
- Isolated plastic case recognized according to UL94-V0

>>> Benefits

- Small-size, light-weight
- Simple Installation
- Over-Voltage protection circuit is installed.

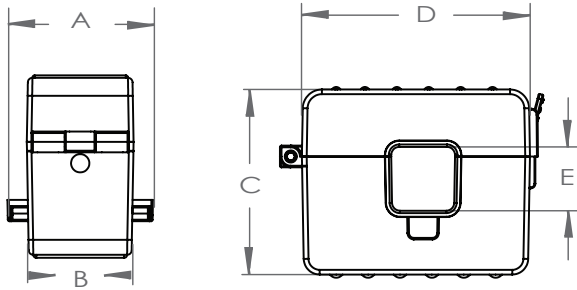
>>> Specification

MODEL	JPS10H -005	JPS10H -010	JPS10H -015	JPS10H -020	JPS10H -025	JPS10H -050	JPS10H -075	JPS10H -100	JPS20H -150	JPS33H -200	JPS33H -250	JPS33H -300	JPS33H -400	JPS33H -500	JPS52H -600	JPS52H -800	JPS52H -1000	JPS52H -1200
Rating current	5A	10A	15A	20A	25A	50A	75A	100A	150A	200A	250A	300A	400A	500A	600A	800A	1000A	1200A
Saturation current	7.5AT	15AT	22.5AT	30AT	37.5AT	75AT	112.5AT	150AT	225AT	250AT	625AT	625AT	625AT	625AT	900AT	1200AT	1400AT	1400AT
Output voltage	±4 V, 1% at rated current RL=10KΩ																	
Offset voltage	±30 mV max Less than (JPS10H) ±20 mV max (JPS20H, JPS33H, JPS52H)																	
Noise level	< 20mVp-p (JPS10H) < 10mVp-p (JPS20H, JPS33H, JPS52H)																	
Output linearity	±1% rated current																	
Power supply	±15 V (±5%) 25mA																	
di/dt response time	3 μ sec (Typ.) at di/dt = F.S/μ Sec.																	
Output temperature character	± 0.2% / °C (Typ.)									± 0.1% / °C (Typ.)								
Insulation withstand voltage	AC 4000V / 1min.																	
Insulation resistance	DC 500V / 500MΩ max																	
Operating Condition	-25°C~+75°C, 85 % RH non-condensing																	
Storage Condition	-35°C~+90°C, 85 % RH non-condensing																	

OPEN-LOOP TECHNOLOGY PQ-CT JPSXXH SERIES



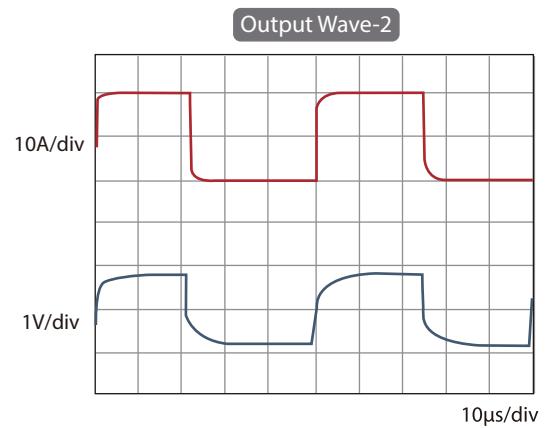
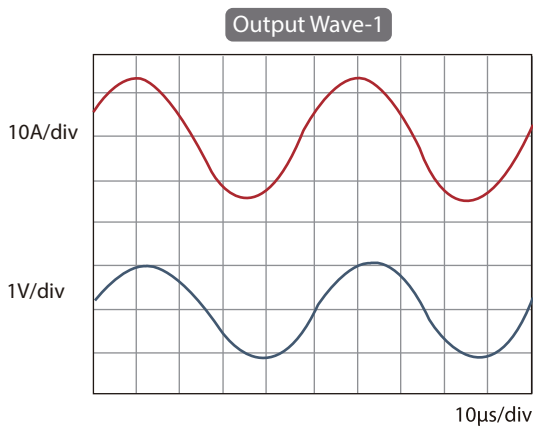
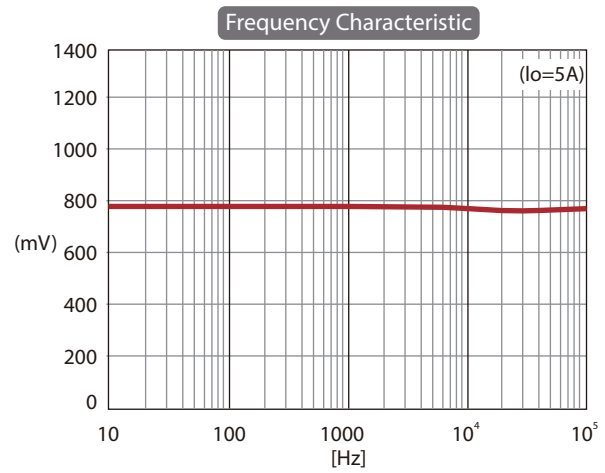
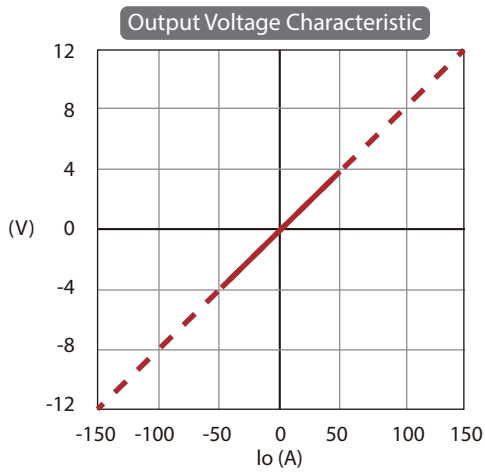
>>>> Dimension



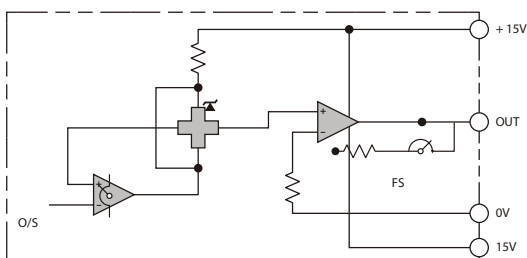
Unit : mm

Model	A	B	C	D	E
JPS10H-XXX	48	35	48	61	10
JPS20H-XXX	47.7	35	58	71.5	20
JPS33H-XXX	49	36	77.5	96	33
JPS52H-XXX	64	41	103.5	125	52

>>>> Graph



>>>> Interlock Block Diagram



>>>> Connection Diagram

